



Newsletter

The nominees for Pupil of the Week are:

Y1W	Isaac
Y1F	Skye
Y2W	Keziah
Y2F	Lukass
Y3W	Emily
Y3F	Macie
Y4W	Finley
Y4F	Alessia
Y5W	Jamie
Y5F	Natalia
Y6W	Mason
Y6F	Elham
POD 2	Leon



Attendance Figures

4F will be wearing their own clothes as reward for highest attendance!

and our winners this week are:



RW	90%
RF	94%
1W	89%
1F	95%
2W	95%
2F	90%
3W	91%
3F	94%
4W	94%
4F	97%
5W	92%
5F	92%
6W	93%
6F	94%

For health and safety reasons the gates to the school car park are locked at the start and the end of the school day. If you access the car park at other times of the day, please note that there is a strict one-way system in operation.



Westfield
Community
School

Issue 14
12th December

Newsletter

As you will be aware we have had an OFSTED inspection in school this week. The report will be available in the new year.

I am extremely proud of all of our staff and our pupils during this visit.

Mrs S Baker
Headteacher



Please see detailed below a list of forthcoming events for your diary:

Reception Party

Tuesday 17th December

Family Bingo Event

Tuesday 17th December

Y3/4 Party

Wednesday 18th December

Y1/2 Party-Y5/6 Party

Thursday 19th December

Y3 Drumming Assembly

Thursday 19th December 9.30am

Nursery Party

Friday 20th December

** Pupils to come to school in their party clothes on the day of their party.*

School closes

Friday 20th December at 3.20pm

Return to school

Tuesday 7th January 2025 doors open at 8.35am, please be in school promptly for the doors closing at 8.50am.



Westfield
Community
School

Issue 14
12th December

Newsletter

Skye 1F

For her determination to be back in school and part of school life again after her hip operation

Isaac 1W

For his all round excellent effort across the curriculum. He has been noticed for fantastic reading and can now move onto dittys next week, using his sounds in his writing, excellent counting in maths and showing skill and precision when painting hot and cold concentric circles in art

Lukass 2F

For having a switched-on week, particularly in English, he worked hard when trying to write the imitation paying close attention to remember finger spaces

Keziah 2W

For being an all-round silent superstar! She always gives 100% in everything she does, always contributes to class discussions and is the perfect Year 2 role model

Macie 3F

For her sheer determination and perseverance to light a fire using flint during our History lesson on the ALPs. Macie tried and tried again until she finally got a spark

Emily 3W

For a standout week, with improvements to her handwriting, becoming more confident in maths, contributing to class discussions, and even standing out to other members of staff. She was made a leader in drumming because of her timing and being able to keep to the rhythm, even whilst dancing

Leon POD 2

For an amazing week in POD and for trying really hard at everything he does



Westfield
Community
School

Issue 14
12th December

Newsletter

Alessia 4F

For always being a model pupil in the classroom, she comes into class everyday with a huge smile on her face and has a fantastic attitude to her learning

Finley 4W

For simply being a pleasure to have in the class. He is simply just such a lovely young boy and is a role model to our class.

Natalia 5F

For being simply amazing, she is determined to succeed through hard-work and dedication to learning

Jamie 5W

For giving his all in everything that he does, and always doing it with a smile on his face

Elham 6F

For the amazing progress she has made this half-term. Elham has read every day, moved confidently up a Big Cat band and achieved 2 times table badges this week

Mason 6W

For his attempts in using ambitious, precise vocabulary to improve his writing ideas



Westfield
Community
School

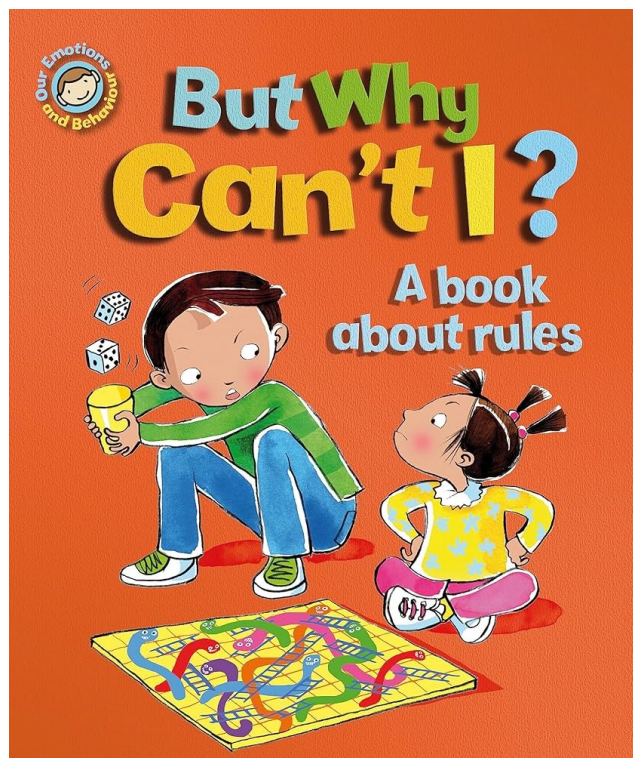
Issue 14
12th December

Newsletter

Our British Value for this half term has been Rule of Law.

The children have been discussing rules and why they are important, following rules in games/sports and learning about laws and consequences. The children in **Year 1** have been learning about the rules to keep safe when crossing the road.

We also welcomed the local police into school to deliver Halloween and Bonfire Night sessions to **UKS2**.



Please see the attached list of food pantries, community cafes/grocers, food banks etc available in the **Wigan borough**.

Please follow the link for further information.

<https://www.wigan.gov.uk/Docs/PDF/Council/The-Deal/Deal-Communities/Here-for-you/Wigan-Borough-Food-Pantries.pdf>



Newsletter

Our activities, in **POD 1**, over the last couple of weeks have been based on the story Anna's Amazing Multi-coloured Glasses. Last week we took part in colour activities based on the days of the week, this week we have explored stripes and spots.



School Travel Strategy Consultation

Please follow link for further information

School Travel Strategy Consultation Details:

- **Launch Date:** 18th November 2024
- **Closing Date:** 26th January 2025, 23:59

Consultation Link: <https://www.gmconsult.org/transport-for-greater-manchester/school-travel-strategy-consultation/>



Westfield
Community
School

Issue 14
12th December

Newsletter



Dear Parent / Carer,

We are delighted to share with you the exciting news that we have successfully secured the Tesco Stronger Starts Fruit and Veg grant for the 24/25 academic year. Tesco have partnered with the British Nutrition Foundation, Groundwork UK and National Schools Partnership to be able to offer the grant. As part of this initiative we have introduced a trolley in school for all pupils to access fruit during the school day and have also been able to offer a wide selection of fruits at our breakfast club. We are hoping to offer our pupils a wide variety of different fruits to allow them to hopefully try something new. Our School Council have also been hard at work designing posters for our new fruit trolley to encourage the pupils to help themselves to the fruit and veg we have on offer.

We hope your children are enjoying the fruit and veg so far and we will share some photographs with you over the next few weeks.



With Christmas approaching we are aware that many families face additional pressures that may impact on them during the festive period. Wigan has developed a network of [Family Hubs](#) that offer a range of online resources, pre-bookable, and drop in sessions to offer whole family support. This will develop and expand across the neighbourhoods as more family hubs are launched in Wigan in 2025.

We are aware that the festive period can be a challenging time for many families. Wigan has developed a network of [Family Hubs](#) that offer a range of pre-bookable and drop in sessions to offer whole family support.

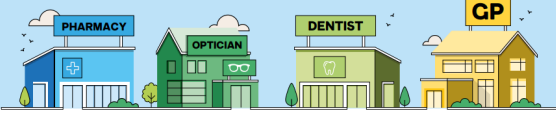
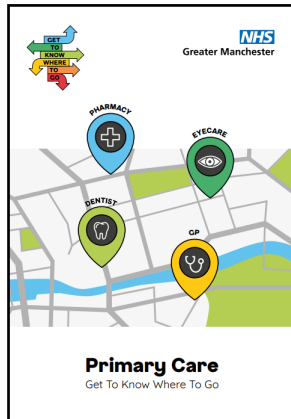
Please note that we will be offering support for families at the following venues between Christmas and New Year.

- The Family hub at The Meadows, 100-116 Ridyard Street, Wigan, WN5 9RQ
- The Start Well Family Centre at the Chappel, Westleigh Lane, Westleigh, WN7 5NJ

Both centres will offer reduced opening times between 9am and 4pm on the 27th December, 30th December, and the 31st December. Normal opening times across all our network will resume on the 2nd January 2025.



Newsletter



Primary Care doing things differently

Demand for primary care is increasing so we are transforming how we work.

A wider range of health professionals than ever is available close to where you live.

There are new ways to easily contact primary care such as the NHS App or an online consultation with your GP practice. These may be more convenient if you are busy, and can fit around work and looking after children!

You can help by using the right service at the right time. It will also mean you will get the help you need for you and your family as quickly as possible.

A fully accessible version of the booklet is also [available to download and view on our website](#).

Our primary care booklet is a handy reference guide intended to give an overview of primary care health services and help families get the care they need from the right people, in the right place, at the right time. It's a busy time of year for all the bugs, coughs and colds at the moment so hopefully good timing for families! Winter is also a time of year when NHS services come under increased pressure so it would be a big help if you could share this families in your area.

This publication covers GP practices, local community pharmacies, high street opticians and dental practices - the day-to-day healthcare that's available close to where people live. These services are all about preventing illness, diagnosing health problems, helping to manage long term conditions, and treating health concerns that don't need hospital care.

Our primary care booklet tells people all they need to know about primary care services – including some things that members of the public may not be familiar with, including:

- The new features on the NHS app
- The new pharmacy first offer
- Help with prescription costs
- Urgent dental and eyecare services – available at evenings and weekends



Your Pharmacy

Pharmacists (or chemists) are healthcare professionals who can give expert advice on minor health problems and illnesses. They can also recommend over-the-counter medicines (medicines you can buy without a prescription).

You don't need an appointment to see a pharmacist and many are open late and at weekends. Most have a private consultation room. If needed, they'll recommend seeing another healthcare professional. They can also help with questions about medication and make sure you're taking it correctly.

Some of the things pharmacists can help with:

- Coughs, colds and sore throats
- Tummy upsets
- Aches and pains
- Skin rashes
- Baby teething
- Nappy rash
- Emergency contraception (not provided by all pharmacies)
- Free blood pressure checks



Newsletter

Keeping your children happy, healthy and well this winter.

Children are especially vulnerable to catching and spreading the flu, which can sometimes lead to serious complications like pneumonia.

The free flu vaccine is the safest and most effective way to protect your child. By vaccinating your child you're also helping to protect other family members, particularly those at higher risk of severe illness, such as younger babies and grandparents. Flu can change each year so it's important that even if your child was vaccinated last year, that they are vaccinated again this year.

School aged children (from Reception to Year 11) are given the flu vaccine as a quick and painless nasal spray at school. You will receive information from IntraHealth about when your child will be vaccinated and a consent form to sign.

The nasal flu vaccine contains a form of gelatine (porcine gelatine). If you prefer a vaccine without gelatine, an injectable option is available. Make sure you tick this option on your consent form. This injection may also be more suitable for children with allergies or other medical conditions. If your child misses their vaccination at school, you can call IntraHealth on 0333 3583 397 to arrange an appointment.

Children who are home-schooled should be offered a flu vaccine at a community clinic. Children who are 4 years old but have not started school can get the flu vaccine at their GP practice.

COVID-19

Children and young people with certain long-term health conditions, or who are immunosuppressed, may also need a COVID-19 vaccination. They are at higher risk of serious illness and hospital admission if they catch COVID-19. Vaccination reduces this risk. COVID-19 vaccinations are not given at schools. If you think your child is eligible for the vaccination, please call the Care Gateway on **0161 947 0770** or **0800 092 4020**.

Vaccines are important all year round

Vaccines are the most effective way to prevent many infectious diseases. The timeline overleaf shows the vaccines your child should have once they are at school and when.

Are you up-to date?

Check their Red Book or contact your GP practice if you're not sure. It's important that vaccines are given on time but it's never too late to catch up on missed doses.

All school aged children should have already received 2 doses of MMR – if they haven't please contact your GP or school immunisation team.

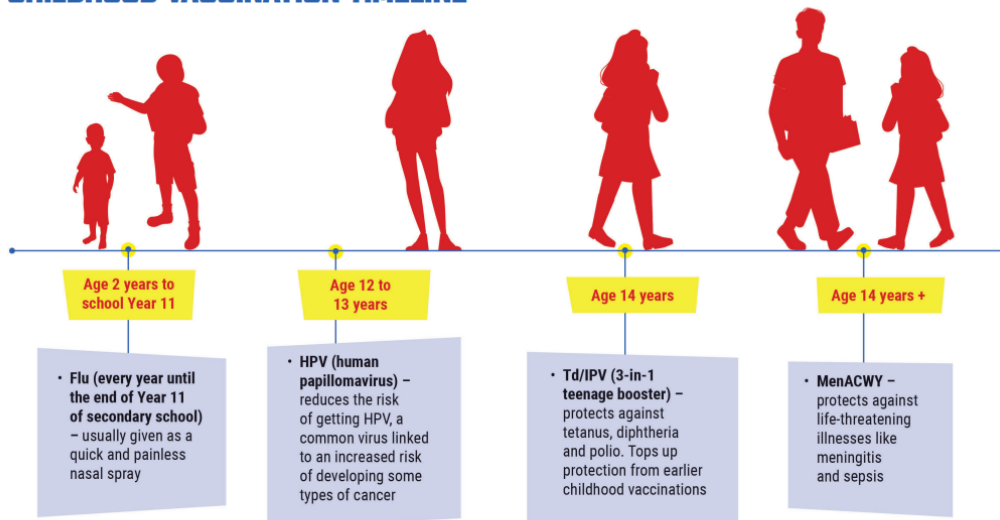
For more information on childhood vaccinations, go to: www.nhs.uk/vaccinations/nhs-vaccinations-and-when-to-have-them

GET WINTER STRONG



Keeping your children happy, healthy and well this winter.

CHILDHOOD VACCINATION TIMELINE



For more information on winter vaccines:

SCAN
HERE



Search: NHS GM winter vax
Visit: www.gmintegratedcare.org.uk/winter-vaccinations



Westfield
Community
School

Issue 14
12th December

Newsletter



COMMUNITY TRUST



CALLING ALL STREET DANCERS!

Westfield Community School WN5 9XN
FREE DANCE SESSIONS STARTING
THURSDAY 26TH SEPTEMBER 2024



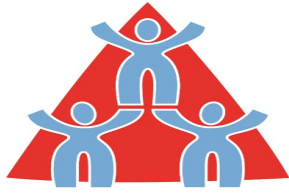
5.15pm-6.15pm ages 8-11 (year 3- year 6)
6.15pm-7.15pm ages 11-16 (year 7-year 11)

Use the QR code to register a place on the first session or email r.wood@wiganathletic.com for further information



Polite Notice

Can we please remind you that it is illegal to park on the pavement or grassed areas at the entrance or exit to the school and doing this is putting our parents and children at danger.



Newsletter



PREMIER LEAGUE KICKS

WIGAN ATHLETIC | 2024/25 TIMETABLE
FREE SESSIONS FOR 8 - 18 YEAR OLDS

MONDAY	TUESDAY	WEDNESDAY	THURSDAY	FRIDAY
EVERMOOR HUB WN8 9HR MIXED FOOTBALL: 6:00 - 8:00pm (8 - 14 years old)	WIGAN YOUTH ZONE WN1 1RU GIRLS' FOOTBALL: 6:00 - 7:45pm (8 - 11 years old)	LAITHWAITE PARK WN5 OUE GIRLS' FOOTBALL: 5:30 - 6:30pm (12 - 18 years old)	TANHOUSE COMMUNITY CENTRE WN8 6AN JUNIOR FOOTBALL: 6:00 - 7:00pm (8 - 11 years old)	STADIUM WAY WN5 OUN SENIOR FOOTBALL: 6:00 - 8:00pm (11 - 16 years old)
LEIGH YOUTH HUB WN7 4JY JUNIOR FOOTBALL: 5:00 - 6:00PM (8 - 11 years old)	JUNIOR FOOTBALL: 6:15 - 7:15pm (8 - 11 years old)	JUNIOR FOOTBALL: 5:30 - 6:30pm (8 - 11 years old)	SENIOR FOOTBALL: 7:00 - 8:00pm (12 - 16 years old)	WESTLEIGH HIGH SCHOOL WN7 5NL SENIOR FOOTBALL: 6:00 - 7:00pm (11 - 16 years old)
HOWE BRIDGE LEISURE CENTRE M46 OPJ SENIOR FOOTBALL: 5:00 - 7:00PM (11 - 16 years old)	WILLIAM FOSTERS WN2 2BU JUNIOR FOOTBALL: 5:30 - 6:30pm (8 - 11 years old)	INCLUSIVE FOOTBALL: 5:30 - 6:30pm (11 - 17 years old)	WESTFIELD PRIMARY SCHOOL WN5 9XN JUNIOR DANCE: 5:15 - 6:15pm (8 - 11 years old)	WEST LANC YOUTH ZONE FOOTBALL AND MULTISPORTS: 6:00 - 8:00pm (11 - 16 years old)
	JUNIOR FOOTBALL: 5:30 - 6:30pm (8 - 11 years old)	SENIOR FOOTBALL: 5:30 - 6:30pm (12 - 18 years old)	SENIOR DANCE: 6:15 - 7:15pm (12 - 16 years old)	
	SENIOR FOOTBALL: 6:30 - 7:30pm (12 - 16 years old)	WIGAN YOUTH ZONE WN1 1RU SENIOR FOOTBALL: 6:00 - 8:00pm (12 - 18 years old)		



Please remind your child not to ride their bikes on the playground.

Thank you



Newsletter



Why breakfast matters

A breakfast factsheet for parents/carers of primary school aged children



A healthy breakfast for my child

Mornings can be a stressful time as a parent or carer, and it's not always easy to get children to eat breakfast. So, why does your child need a healthy breakfast?

Why is a healthy breakfast important?

Healthy breakfasts provide important nutrients for children's health and development. If children skip breakfast regularly this can make it harder for them to get all the nutrients they need.

Studies suggest that having breakfast can benefit children's health, body weight and learning.

What do healthy breakfasts provide?

Healthy breakfasts can provide important nutrients for children including:

- ✓ **Carbohydrate** for energy to support growth, activity and learning.
- ✓ **Protein** for healthy muscles and for bone development
- ✓ **Fibre** for gut health
- ✓ **Calcium** for healthy bones
- ✓ **Iron** for brain development

Ideas for healthy breakfasts

A healthy breakfast doesn't have to be complicated or take a long time to prepare. It's a good idea to include starchy foods like wholegrain breads or breakfast cereals, some fruit or vegetables, some dairy or protein foods and a drink – water and milk are best.

If time is tight to have breakfast at home, then breakfast clubs at school are a good option – talk to your school for more information.

Find out more

If you'd like to find out more about healthy breakfasts, take a look at the **Good Breakfast Guide** on our website: <https://bit.ly/NSchoolBreakfastWeek>

Breakfast ideas to try at home:

- ✓ Wholemeal bagel with reduced fat soft cheese and sliced fruit
- ✓ Wholegrain cereal with sliced banana, raisins and milk
- ✓ Wholemeal toast with baked beans and sliced pepper
- ✓ Wholemeal roll with sliced boiled egg, cherry tomatoes and orange segments
- ✓ Porridge or overnight oats with frozen berries or dried fruit