



# Newsletter

The nominees for Pupil of the Week are:

Y1W	Ella
Y1F	Jamal
Y2W	Mia
Y2F	Anthony
Y3W	Johnathan
Y3F	Myar
Y4W	Noah
Y4F	Lincoln-Rose
Y5W	Khaled
Y5F	Kayden
Y6W	Mollie
Y6F	Demi-Lea



## Attendance Figures

6F will be wearing their own clothes as reward for highest attendance!

and our winners this week are:



RW	93%
RF	94%
1W	96%
1F	88%
2W	95%
2F	94%
3W	94%
3F	94%
4W	93%
4F	89%
5W	90%
5F	92%
6W	92%
6F	97%



The final total raised for the Asda cashpot is **£703.21** we would like to thank you all for your continued support.  
The money raised will be used to pay for the end of term parties for the children.



Westfield  
Community  
School  
**Newsletter**

Issue 13  
5th December



Please see detailed below a list of forthcoming events for your diary:

<b>A Musical Showcase at Westfield</b>	<b>Tuesday 10<sup>th</sup> December 3.20pm</b>
<b>Christmas Jumper Day</b>	<b>Wednesday 11<sup>th</sup> December</b>
<b>Christmas Dinner</b>	<b>Wednesday 11<sup>th</sup> December</b>
<b>Reception Festive Singalong</b>	<b>Wednesday 11<sup>th</sup> December 2.30pm</b>
<b>Reception Festive Singalong</b>	<b>Thursday 12<sup>th</sup> December 9.15am</b>
<b>Y5/6 Party</b>	<b>Monday 16<sup>th</sup> December</b>
<b>Reception Party</b>	<b>Tuesday 17<sup>th</sup> December</b>
<b>Family Bingo Event</b>	<b>Tuesday 17<sup>th</sup> December</b>
<b>Y3/4 Party</b>	<b>Wednesday 18<sup>th</sup> December</b>
<b>Y1/2 Party</b>	<b>Thursday 19<sup>th</sup> December</b>
<b>Y3 Drumming Assembly</b>	<b>Thursday 19<sup>th</sup> December 9.30am</b>
<b>Nursery Party</b>	<b>Friday 20<sup>th</sup> December</b>

*\* Pupils to come to school in their party clothes on the day of their party.*

**School closes**

**Friday 20th December at 3.20pm**

**Return to school**

**Tuesday 7<sup>th</sup> January 2025** doors open at 8.35am, please be in school promptly for the doors closing at 8.50am.



Westfield  
*Community*  
School

Issue 13  
5th December

# Newsletter

## **Jamal 1F**

*For being a true gentleman*

## **Ella 1W**

*For using her Fred fingers and set two sounds when writing*

## **Anthony 2F**

*For having a superb week in English, for listening well and working independently all week whilst writing a non-chronological report*

## **Mia 2W**

*For having a fantastic week in English and Maths, she has worked hard all week and even managed to complete some tasks independently*

## **Myar 3F**

*For her superb knowledge of past and present tense in our writing this week*

## **Johnathan 3W**

*Kindness is a happy hello  
Every morning to all  
Kindness is holding the door  
On the way back from the hall  
Kindness is spending lunch  
Tidying up the class table  
Kindness is being a good shoulder partner  
When others are less able  
Kindness is offering to help,  
It is including everyone in the fun  
Kindness has a name  
His name is Johnathan*



Westfield  
*Community*  
School

Issue 13  
5th December

## Newsletter

### **Lincoln-Rose 4F**

*For her massive increase in confidence this week, Lincoln has been working extremely hard with her shoulder partner this week in Maths, tackling some tricky 4 digit subtraction with exchange and is sharing her ideas more with the class*

### **Noah 4W**

*For being a superstar scientist yesterday, he understood what conductors and insulator were and could give lots of examples of both and worked excellently as a group to conduct an experiment to find out which materials were which*

### **Kayden 5F**

*For being a joy to have in the classroom, he works hard when asked and is eager to please*

### **Khaled 5W**

*For writing a speech at home to explain what it means to be a Muslim and the similarities to Christianity, then standing up in front of the class and delivering the speech to assist with his classmates RE learning this term*

### **Demi-Lea 6F**

*For always making an excellent effort in lessons and in particular this week, for working hard to write a detailed and interesting biography of Marcus Rashford*

### **Mollie 6W**

*For the levels of detail, attention to presentation and overall effort and enthusiasm put into writing biography*



Westfield  
*Community*  
School

Issue 13  
5th December

# Newsletter

In **Year 3**, we have been learning about how people in the Stone Age started a fire to cook food and keep warm. We went over to the ALPs where Carl showed us how to start a fire and we had a go ourselves! We even toasted our own marshmallows to make s'mores whilst keeping warm around the fire.





Westfield  
Community  
School

Issue 13  
5th December

# Newsletter



This week **Year 4** have been on a treasure hunt in the ALPS to learn all about some of the world's rivers in Geography.



School Travel Strategy Consultation

**Please follow link for further information**

**School Travel Strategy Consultation Details:**

- **Launch Date:** 18th November 2024
- **Closing Date:** 26th January 2025, 23:59

**Consultation Link:** <https://www.gmconsult.org/transport-for-greater-manchester/school-travel-strategy-consultation/>



Westfield  
Community  
School

Issue 13  
5th December

# Newsletter

In our RE lessons in **Year 2**, we have been learning about Christianity and this week we have made our own Christingles and labelled what each part symbolises!



Please see the attached list of food pantries, community cafes/grocers, food banks etc available in the **Wigan borough**.

**Please follow the link for further information.**

<https://www.wigan.gov.uk/Docs/PDF/Council/The-Deal/Deal-Communities/Here-for-you/Wigan-Borough-Food-Pantries.pdf>

For health and safety reasons the gates to the school car park are locked at the start and the end of the school day. If you access the car park at other times of the day, please note that there is a strict one-way system in operation.



# Newsletter



In **POD 1**, we finished our topic about the story *Whatever Next*, by making rockets out of cardboard tubes, egg boxes and tissue paper.

We also had a go at making chocolate rice crispy cakes, we really had to use our muscles to break the chocolate up!



## Polite Notice

Can we please remind you that it is illegal to park on the pavement or grassed areas at the entrance or exit to the school and doing this is putting our parents and children at danger.



Westfield  
*Community*  
School

Issue 13  
5th December

# Newsletter



**FAMILY CHRISTMAS BINGO**  
**TUESDAY 17TH DECEMBER**  
SCHOOL HALL ~ 4.45pm - 6.45pm.

Please note ~ ticket only event ~ places limited!

**TICKETS ON SALE AT THE SCHOOL OFFICE**

From Wednesday 27th November ~ before and after school daily.

**SOLD OUT**

**Tickets £2 each.**

**Adults** ~ includes a board for each game.  
**Children** ~ a board for each game plus 2 children's games.



We are pleased to be holding our annual **Christmas Bingo event** again later this term. We are kindly requesting donations of chocolate towards the prizes. Selection boxes, chocolate bars, tubs, and boxes would all be greatly appreciated.

If you are able to contribute, please drop off your donations at the front office or give them to your child's class teacher by **Tuesday 10th December**. Thank you for your continued support.



Westfield  
Community  
School

Issue 13  
5th December

# Newsletter



Dear Parent / Carer,

We are delighted to share with you the exciting news that we have successfully secured the Tesco Stronger Starts Fruit and Veg grant for the 24/25 academic year. Tesco have partnered with the British Nutrition Foundation, Groundwork UK and National Schools Partnership to be able to offer the grant. As part of this initiative we have introduced a trolley in school for all pupils to access fruit during the school day and have also been able to offer a wide selection of fruits at our breakfast club. We are hoping to offer our pupils a wide variety of different fruits to allow them to hopefully try something new. Our School Council have also been hard at work designing posters for our new fruit trolley to encourage the pupils to help themselves to the fruit and veg we have on offer.

We hope your children are enjoying the fruit and veg so far and we will share some photographs with you over the next few weeks.



With Christmas approaching we are aware that many families face additional pressures that may impact on them during the festive period. Wigan has developed a network of [Family Hubs](#) that offer a range of online resources, pre-bookable, and drop in sessions to offer whole family support. This will develop and expand across the neighbourhoods as more family hubs are launched in Wigan in 2025.

We are aware that the festive period can be a challenging time for many families. Wigan has developed a network of [Family Hubs](#) that offer a range of pre-bookable and drop in sessions to offer whole family support.

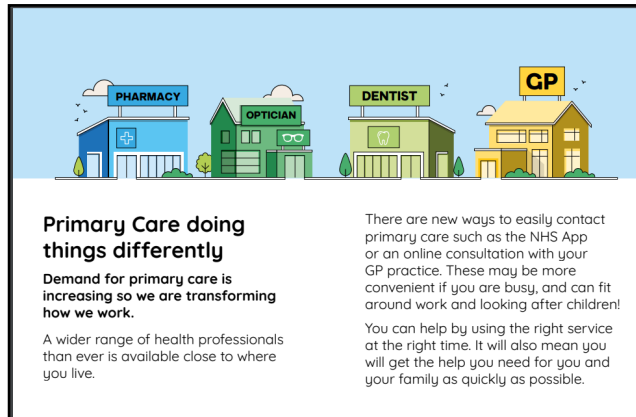
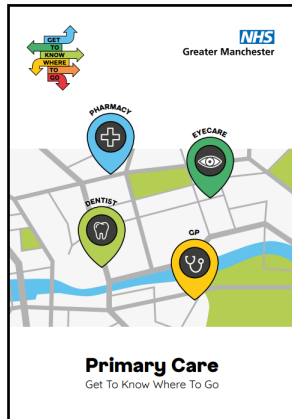
Please note that we will be offering support for families at the following venues between Christmas and New Year.

- The Family hub at The Meadows, 100-116 Ridyard Street, Wigan, WN5 9RQ
- The Start Well Family Centre at the Chappel, Westleigh Lane, Westleigh, WN7 5NJ

Both centres will offer reduced opening times between 9am and 4pm on the 27<sup>th</sup> December, 30<sup>th</sup> December, and the 31<sup>st</sup> December. Normal opening times across all our network will resume on the 2<sup>nd</sup> January 2025.



# Newsletter



A fully accessible version of the booklet is also [available to download and view on our website](#).

Our primary care booklet is a handy reference guide intended to give an overview of primary care health services and help families get the care they need from the right people, in the right place, at the right time. It's a busy time of year for all the bugs, coughs and colds at the moment so hopefully good timing for families! Winter is also a time of year when NHS services come under increased pressure so it would be a big help if you could share this families in your area.

This publication covers GP practices, local community pharmacies, high street opticians and dental practices - the day-to-day healthcare that's available close to where people live. These services are all about preventing illness, diagnosing health problems, helping to manage long term conditions, and treating health concerns that don't need hospital care.

Our primary care booklet tells people all they need to know about primary care services – including some things that members of the public may not be familiar with, including:

- The new features on the NHS app
- The new pharmacy first offer
- Help with prescription costs
- Urgent dental and eyecare services – available at evenings and weekends





# Newsletter

Keeping your children happy, healthy and well this winter.

**Children are especially vulnerable to catching and spreading the flu, which can sometimes lead to serious complications like pneumonia.**

The free flu vaccine is the safest and most effective way to protect your child. By vaccinating your child you're also helping to protect other family members, particularly those at higher risk of severe illness, such as younger babies and grandparents. Flu can change each year so it's important that even if your child was vaccinated last year, that they are vaccinated again this year.

School aged children (from Reception to Year 11) are given the flu vaccine as a quick and painless nasal spray at school. You will receive information from IntraHealth about when your child will be vaccinated and a consent form to sign.

The nasal flu vaccine contains a form of gelatine (porcine gelatine). If you prefer a vaccine without gelatine, an injectable option is available. Make sure you tick this option on your consent form. This injection may also be more suitable for children with allergies or other medical conditions. If your child misses their vaccination at school, you can call IntraHealth on 0333 3583 397 to arrange an appointment.

Children who are home-schooled should be offered a flu vaccine at a community clinic. Children who are 4 years old but have not started school can get the flu vaccine at their GP practice.

### COVID-19

Children and young people with certain long-term health conditions, or who are immunosuppressed, may also need a COVID-19 vaccination. They are at higher risk of serious illness and hospital admission if they catch COVID-19. Vaccination reduces this risk. COVID-19 vaccinations are not given at schools. If you think your child is eligible for the vaccination, please call the Care Gateway on **0161 947 0770** or **0800 092 4020**.

### Vaccines are important all year round

Vaccines are the most effective way to prevent many infectious diseases. The timeline overleaf shows the vaccines your child should have once they are at school and when.

### Are you up-to date?

Check their Red Book or contact your GP practice if you're not sure. It's important that vaccines are given on time but it's never too late to catch up on missed doses.

All school aged children should have already received 2 doses of MMR – if they haven't please contact your GP or school immunisation team.

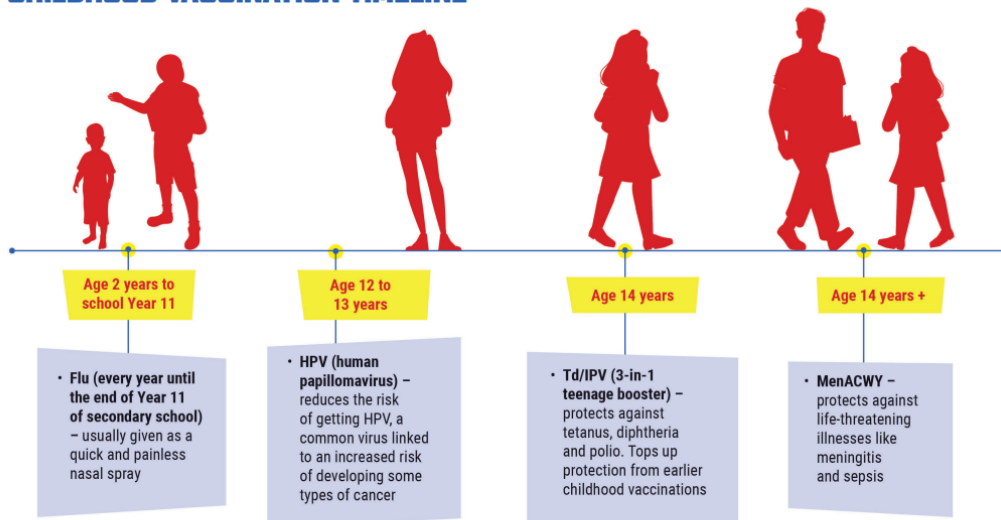
For more information on childhood vaccinations, go to: [www.nhs.uk/vaccinations/nhs-vaccinations-and-when-to-have-them](http://www.nhs.uk/vaccinations/nhs-vaccinations-and-when-to-have-them)

# GET WINTER STRONG



Keeping your children happy, healthy and well this winter.

## CHILDHOOD VACCINATION TIMELINE



For more information on winter vaccines:

SCAN  
HERE



Search: NHS GM winter vax  
Visit: [www.gmintegratedcare.org.uk/winter-vaccinations](http://www.gmintegratedcare.org.uk/winter-vaccinations)



Westfield  
*Community*  
School

Issue 13  
5th December

# Newsletter



COMMUNITY  
TRUST



## CALLING ALL STREET DANCERS!

Westfield Community School WN5 9XN  
FREE DANCE SESSIONS STARTING  
THURSDAY 26TH SEPTEMBER 2024



5.15pm-6.15pm ages 8-11 (year 3- year 6)

6.15pm-7.15pm ages 11-16 (year 7-year 11)

Use the QR code to register a place on the  
first session or email  
[r.wood@wiganathletic.com](mailto:r.wood@wiganathletic.com) for further  
information





Westfield  
Community  
School

Issue 13  
5th December

# Newsletter



## PREMIER LEAGUE KICKS

WIGAN ATHLETIC | 2024/25 TIMETABLE  
FREE SESSIONS FOR 8 - 18 YEAR OLDS

MONDAY	TUESDAY	WEDNESDAY	THURSDAY	FRIDAY
<b>EVERMOOR HUB WN8 9HR</b> MIXED FOOTBALL: 6:00 - 8:00pm (8 - 14 years old)	<b>WIGAN YOUTH ZONE WN1 1RU</b> GIRLS' FOOTBALL: 6:00 - 7:45pm (8 - 11 years old)	<b>LAITHWAITE PARK WN5 OUE</b> GIRLS' FOOTBALL: 5:30 - 6:30pm (12 - 18 years old)	<b>TANHOUSE COMMUNITY CENTRE WN8 6AN</b> JUNIOR FOOTBALL: 6:00 - 7:00pm (8 - 11 years old)	<b>STADIUM WAY WN5 OUN</b> SENIOR FOOTBALL: 6:00 - 8:00pm (11 - 16 years old)
<b>LEIGH YOUTH HUB WN7 4JY</b> JUNIOR FOOTBALL: 5:00 - 6:00PM (8 - 11 years old)	JUNIOR FOOTBALL: 6:15 - 7:15pm (8 - 11 years old)	JUNIOR FOOTBALL: 5:30 - 6:30pm (8 - 11 years old)	SENIOR FOOTBALL: 7:00 - 8:00pm (12 - 16 years old)	<b>WESTLEIGH HIGH SCHOOL WN7 5NL</b> SENIOR FOOTBALL: 6:00 - 7:00pm (11 - 16 years old)
<b>HOWE BRIDGE LEISURE CENTRE M46 OPJ</b> SENIOR FOOTBALL: 5:00 - 7:00PM (11 - 16 years old)	<b>WILLIAM FOSTERS WN2 2BU</b> JUNIOR FOOTBALL: 5:30 - 6:30pm (8 - 11 years old)	INCLUSIVE FOOTBALL: 5:30 - 6:30pm (11 - 17 years old)	<b>WESTFIELD PRIMARY SCHOOL WN5 9XN</b> JUNIOR DANCE: 5:15 - 6:15pm (8 - 11 years old)	<b>WEST LANC YOUTH ZONE</b> FOOTBALL AND MULTISPORTS: 6:00 - 8:00pm (11 - 16 years old)
	JUNIOR FOOTBALL: 5:30 - 6:30pm (8 - 11 years old)	SENIOR FOOTBALL: 5:30 - 6:30pm (12 - 18 years old)	SENIOR DANCE: 6:15 - 7:15pm (12 - 16 years old)	
	<b>WIGAN YOUTH ZONE WN1 1RU</b> SENIOR FOOTBALL: 6:30 - 7:30pm (12 - 16 years old)	<b>WIGAN YOUTH ZONE WN1 1RU</b> SENIOR FOOTBALL: 6:00 - 8:00pm (12 - 18 years old)		



Please remind your child not to ride their bikes on the playground.

Thank you



# Newsletter



## Why breakfast matters

A breakfast factsheet for parents/carers of primary school aged children



### A healthy breakfast for my child

Mornings can be a stressful time as a parent or carer, and it's not always easy to get children to eat breakfast. So, why does your child need a healthy breakfast?

### Why is a healthy breakfast important?

Healthy breakfasts provide important nutrients for children's health and development. If children skip breakfast regularly this can make it harder for them to get all the nutrients they need.

Studies suggest that having breakfast can benefit children's health, body weight and learning.

### What do healthy breakfasts provide?

Healthy breakfasts can provide important nutrients for children including:

- ✓ **Carbohydrate** for energy to support growth, activity and learning.
- ✓ **Protein** for healthy muscles and for bone development
- ✓ **Fibre** for gut health
- ✓ **Calcium** for healthy bones
- ✓ **Iron** for brain development

### Ideas for healthy breakfasts

A healthy breakfast doesn't have to be complicated or take a long time to prepare. It's a good idea to include starchy foods like wholegrain breads or breakfast cereals, some fruit or vegetables, some dairy or protein foods and a drink – water and milk are best.

If time is tight to have breakfast at home, then breakfast clubs at school are a good option – talk to your school for more information.

### Find out more

If you'd like to find out more about healthy breakfasts, take a look at the **Good Breakfast Guide** on our website: <https://bit.ly/NSchoolBreakfastWeek>

### Breakfast ideas to try at home:

- ✓ Wholemeal bagel with reduced fat soft cheese and sliced fruit
- ✓ Wholegrain cereal with sliced banana, raisins and milk
- ✓ Wholemeal toast with baked beans and sliced pepper
- ✓ Wholemeal roll with sliced boiled egg, cherry tomatoes and orange segments
- ✓ Porridge or overnight oats with frozen berries or dried fruit